



**Anacortes Bellingham Mt Vernon Sitka**  
 8876 S. March Point Rd. 1619 Kentucky Street 2609 Old Hwy. 99 S. 210 Jarvis St.  
 360-293-7788 360-734-5717 360-428-7788 907-747-5315



## September 2007 Birch News

*More Than Just A Rental Store*

### Customer Focus:

#### Ackermann Electric Company

Located at 1700 Railroad Avenue in Mount Vernon, Ackermann Electric is a family owned "small company" which has serviced Skagit, Whatcom, Island, and Snohomish counties for almost 50 years. Ackermann Electric takes great pride in their work and is willing to go the extra mile for its customers. "We are a service oriented shop, taking care of customer needs in the residential, commercial, and industrial areas".

They also specialize in designing and building electrical jobs for the customer which includes areas from basic residential house wiring through automation of an industrial plant.



Evan has been a great customer of Birch Equipment for over 4 years "I usually don't call anyone else; it's just not worth it. The pricing is there, there's never a hassle, and I'm always taken care of. Birch is practically a neighbor".

Examples of notable projects by Ackermann include, a 5000 square foot home on Samish Island, Smokey Point Concrete Batch plant, Mount Vernon Christian Highschool project, mining plants in Mt. Vernon and Burlington, and waste water systems throughout Skagit and Island counties.

Birch Equipment is a dealer distributor of many Gehl products. Be sure to take advantage of the Gehl sale going on now.

**GEHL** 72 month financing available!

- On all DL, RS and CT series
- Eligible for dealer rental fleet
- CPO program not available
- Lasts until 09/30/2007

Birch is a local dealer for many of these GEHL products:

- \* Track Machines
- \* 519 Forklifts
- \* Tires
- \* DL8's

### Equipment-4-Sale... New & Used

Whether its time for a new paint job or yard maintenance, Birch has a variety of equipment to help you with all your home improvement needs, inside and out. Make sure to take a look at our Fall sale flyer for the great deals. Visit our website at [www.birchequipment.com](http://www.birchequipment.com).

- Rock Drills
- Generators
- Rammers
- Brick Saws
- Power trowels
- Weedeaters
- Sod Cutters
- Excavators
- Backhoes
- Augers
- Hand Snakes
- Light Stands

Thatchers  
 NEW \$979.00  
 USED \$499.00



KX41 Excavators  
 NEW \$22,392.75  
 USED \$10,900.00



Sod Cutters  
 NEW 3,459.00  
 USED 1,799.00



10" Tile Saws  
 NEW \$599.00  
 USED \$399.00

For a complete listing check out our website.

[www.birchequipment.com](http://www.birchequipment.com)

or click on this link.

### New Fleet

#### October

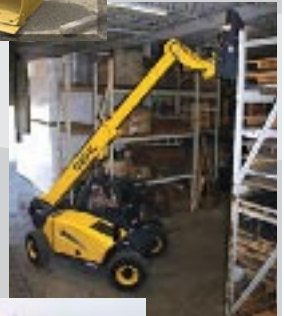
##### -3 Yard Loaders-

- huge bucket capacity
- operating weight 24,846
- overall height 10' 8"



##### -RS 519 Forklifts

- max lift capacity of 5,500 lbs,
- max lift height of 19'1",
- turning radius of less than 11'
- 360 degree visibility from cab



##### -DL 10 Reach Forklifts

- 55' reach
- Enclosed cab



#### November

##### -RS 8 Forklifts

##### -RS 8 Forklifts with cabs

### Retail

- Seymour by Sycamore Inverted Marking paint (purchase by the pallet load, case, or single can).
- Laser Levels w/grade rod & tripod
- Gas 14" Demo Saws



## Our Crew ... moving in



**Luke Rades**-Inside Sales Rep - Bellingham

- Enjoys playing electric guitar.
- A Washingtonian, originally from Tacoma
- Graduated from WWU with English Lit major.
- Favorite part about working at Birch is the customer interaction and the heavy equipment.



**Nancy Harvin**-Inside Sales Rep -Anacortes

- 23 years of rental industry experience.
- Has 4 kids, all raised in Anacortes.
- Loves to camp, garden & play with her grandkids.

## ...and moving up

### Amanda Stephenson-Asst. Manager- Mt Vernon

Amanda was hired 5 years ago by Birch as an Inside Sales Rep. Within a few months she moved to small equipment and trained for 3 months. Known as "Demanda" for her strong and hard work ethic, Amanda recently became Mt. Vernon's Assistant Store Manager. Amanda enjoys working at Birch because of "the staff and opportunity to grow within the company".



*p.s. Congrats on your engagement!*

### So long summer....

Now that our 10 days of summer are over its time to start thinking about inside home improvement projects! Don't know where to begin? Come ask our sales reps how to get started.

### Birch has a great variety of supplies for all your needs:

- |                 |                  |                        |
|-----------------|------------------|------------------------|
| -Hand Tools     | -Tile Saws       | -Floor Nailers         |
| -Floor Buffers  | -Carpet Cleaners | -Carpet Install Tools  |
| -Paint Sprayers | -Drills/Sanders  | -Pressure Washers      |
| -Hedge Trimmers | -Tree Pruners    | -Chain Saws            |
| -Dump Trailers  | -Wood Chippers   | -Dingos                |
| -Dehumidifiers  | -Heaters         | <b>-and much more!</b> |

For your convenience Birch carries all the necessary safety gear you'll need. Pick up your ear plugs, dust masks, gloves, safety glasses, etc. with your equipment.

## 3 Keys to a Fast Dryout

1. Temperature
2. Air Movement
3. Dehumidification

Birch has truckloads of heaters, blowers, fans and dehumidifiers ready for action. Call any store - anytime;; we're ready to help. FYI - Our blowers and dehumidifiers are manufactured in Skagit County by Dri-Eaz - a great local company with a world-wide customer base.

**RE use, RE cycle, and RE invent ...** at the new RE store location on Broadway and Meridian. Birch Equipment is excited to announce their ongoing support of this non-profit organization as they move to their new home.

Established in 1993 the RE store has been offering used building materials, salvage, complete building deconstruction, and green building education for over 10 years.

With over 30,000 square feet of retail space, it is the largest retail business in downtown Bellingham.

Some of the great finds in their large selection are:

- |            |                     |
|------------|---------------------|
| * Doors    | * Paint             |
| * Windows  | * Hinges            |
| * Lumber   | * Knobs             |
| * Flooring | * Hardware          |
| * Paneling | * Plumbing Parts    |
| * Lighting | * Electrical        |
| * Sinks    | * Chairs            |
| * Tubs     | * Pipe              |
| * Toilets  | * Ducting           |
| * Cabinets | * Trim & much more! |



In support of the big move, Birch Equipment donated Silent Auction items & equipment for the Annual Rockin at the RE store fundraiser.

The event benefited the remodeling of the new sustainable living center, the organization's permanent new home. These events have been a great way for Birch to contribute to their fund-raising efforts.

## 11th Annual Open Houses...

After 1,100 pounds of wild salmon, 2,000 Hemplers hotdogs, 1,544 cans of pop, and 70 bags of chips we managed to thank 2,000 of our customers at our annual open houses, and we had a great time! For those of you who couldn't make it this year don't sweat, only 358 more days until the next one. From boom rides to our local venues lunch there was plenty to see and do.



**MISS THE OPEN HOUSE?** For those of you who couldn't make it to our open houses you can still take advantage of our \$10 coupon, spend \$60 or more and receive \$10 off.

**JUST BRING IN THIS NEWS-LETTER**

SURE BEATS USING A SHOVEL

**Open House Special!**

**\$10 OFF!**

Any Tool or Equipment Rental  
valued at over \$60.00 expires 12/31/2007

www.birchequipment.com

<p><b>ANACORTES</b> 8876 S. March Pt. Rd. 360.293.7788</p> <p><b>BELLINGHAM</b> 1619 Kentucky Street 360.734.5717</p> <p><b>MT. VERNON</b> 2609 Old Hwy. 95 S. 360.428.7788</p>	<p><b>BIRCH EQUIPMENT</b> <small>More Than Just A Rental Store</small></p>
---	--