



Anacortes
8876 S. March Point Rd.
360-293-7788

Bellingham
1619 Kentucky Street
360-734-5717

Mt Vernon
2609 Old Hwy. 99 S.
360-428-7788

Sitka
210 Jarvis St.
907-747-5315



October 2007 Birch News

More Than Just A Rental Store

Customer Focus:

Faber Brothers Construction Inc

Faber Brothers Construction was established in 1987 by Rick and Ron Faber as a design-build full-service company. They offer all of the necessary construction experience, design development, and financial stability to professionally execute a turn key building program within your budget and time requirements.

Today Faber Brothers Construction continues in its complete design-build, full-service tradition with a team of qualified designers, project managers and crew with literally hundreds of years of experience in the construction industry.



Tim Unick, Site Superintendent for Faber Brothers says, "I choose Birch Equipment for my job requirements because of their quality of service and staff. They listen to me about what equipment I need in order to get my job done, the way I want it done."

Fall Equipment-4-Sale...New & Used

Equipment	Location	New	Used
2.4 KW Generators	WA	\$ 739.00	\$ 249.00
Dehumidifier 120 Dri-Eaz	WA/AK	\$1,199.00	\$ 595.00
Turbo Dryers	AK	\$ 229.00	\$ 149.00
180K Indirect Heaters	WA	\$1,795.00	\$1,295.00
290K Direct Heaters	WA	\$2,195.00	\$1,895.00
Heat Ker 110,000 BTU	AK	\$ 499.00	\$ 199.00

Time is running out...

Ask a staff member about our fall equipment sales flyer, we have great deals on many indoor and outdoor equipment needed for the fall season. From everything for residential and job site clean up to indoor maintenance make sure to check our website before time runs out.

Click on this link to view a complete listing of all our specials...

Dry Heat Minus the Fumes

Now is the time of year to start thinking about staying dry and keeping the working space dry too. Lower humidity and ward off mildew, create a better working environment, and heat space without toxic fumes. Birch has a large selection of heating material to use during the rainy season. Dry out fast with Birch heaters, dehumidifiers, blowers & fans.

Estimates on drying....



Up to 15' x 15' Room:

- 1 Dehumidifier (1200 model)
- 2-3 Turbo Dryers or Ace Fans

Up to 25' x 25' House:

- 2 Dehumidifiers (1200 model)
- 5 to 7 Turbo Dryers or Ace Fans

Up to 35' x 35' Buiding:

- 3 Dehumidifiers (1200 model)
- 8 to 11 Turbo Dryers or Ace Fans

Visit www.birchequipment.com for a complete listing of all heating and drying equipment we have in stock.

Need a pump?

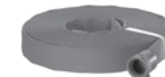
Birch has over 130 pumps to meet any demand and enough hose to handle any job. Call any store, any time...we're available 24 hours/day.

- Submersibles
- Diaphragms
- Trash Pumps
- Centrifugals
- High Pressure Pumps



Pump Accessories Include:

- Suction & Discharge Hoses
- Hydrant Wrenches
- Garden Hoses
- Fire Hoses



Too busy to stop by? Or forgot to call? Check out our website for pricing, models, and an inventory of all equipment for rent and sale. Click on the link below and read through our sales flyer and search for the materials you need.

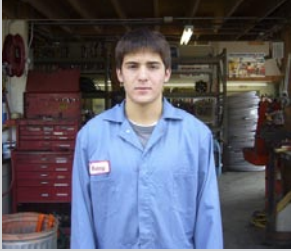
www.birchequipment.com

New Crew...



Jaron Franklin - Yard Rep Bellingham

- Likes to paint ball and fish
- Want to be an HVAC Technician
- Loves Thai food
- Likes working at Birch because "I'm mechanically inclined, and like big equipment."



Kenny Schaumberg - Yard Rep Bellingham

- Plays soccer and guitar
- Wants to be an Environmental Engineer
- Favorite food is Italian
- Likes working at Birch because "I like fixing stuff".



Mark Bartlett - Yard Rep Sitka

- Been working with equipment for many years.
- An artist for over 20 yrs.
- Worked in galleries all over Alaska
- Has 4 kids

IT'S FALL time for aerating

For optimal effectiveness aeration should be performed at least once annually. Spring (between March and May) or Fall (between August and November) are the ideal times to aerate grass. Lawns that receive regular aeration will be greener, easier to maintain and suffer from fewer pest problems and disease.

To Achieve the Best Results:

- Water area to be aerated the night before. This will help to soften the soil, allowing for maximum core penetration.
- Before beginning, map out any obstructions such as sprinkler heads or drains.
- Cover every inch of the lawn and go over high traffic areas more than once.
- After aerating, water the lawn and apply fertilizer. This will promote growth and allow grass to compete with weed growth weed growth.

Thatching goes along with aerating; a thatcher will get rid of the plugs and your lawn will keep healthier with the dethatching.

Birch has aerators & thatchers available for rent.



CHECK OUR FALL SALES FLYER FOR SPECIAL PRICES ON AERATORS.

10% OFF

Carpet Cleaners & Extractors

1 day rent

Expires 11/15/2007



Carpet Solution Quart \$4.95 each

- box of 6 @ \$4.66 ea; case of 12 @ \$4.00 ea
- 1/2 gal @ \$8.95 ea; box of 4 @ \$8.49 ea; case of 8 @ \$7.24 ea

P-B Gone Pet Stain Remover \$4.95 each

- box of 6 @ \$4.66 each, case of 12 @ \$4.00 each

Upholstery Cleaner \$5.95 each

Spot & Stain Remover \$5.95 each

Carpet Deodorizer \$5.95 each

Traffic Lane Cleaner \$5.95 each

- box of 6 @ \$5.49 each; case of 12 @ \$4.83 each

Know our Stuff

Birch sells everything we rent, we're a certified dealer for the following lines:

- Multiquip** - {Including Stow, Whiteman, & Mikasa} Water Pumps, Generators, Welders, Lighting, Compaction Equipment, Concrete/Masonry Equipment
- Clemco** - Sand Blasting Equipment
- Bomag** - Compaction Equipment
- Seymour of Sycamore Paint** - A full line of spray paint, upside down paint, and primers
- Star Diamond Tools** - Diamond blades, core drill bits, and grinding wheels
- Genie** - Aerial equipment (Boom lifts, personnel hoists, material hoists)
- MK Diamond** - Concrete saws, tile saws, brick saws
- Edco** - Concrete saws, tile saws, brick saws, concrete grinders & planers
- Gehl** - Reach forklifts and Skidsteers loaders



Birch Equipment is Offering Train-the-Trainer Classes with factory trained & certified representatives from

GEHL and **Genie**



- Course consists of class time & covers extensive hands on equipment training on Gehl skidsteers & reach forklifts, and Genie aerial lifts.
- Each course certifies participants as trainers for Gehl & Genie equipment operators.
- Contact one of our Store Managers for more information.

One More Party Left

Birch is celebrating our last Open House of the year. With over 600 people joining us, it's a great way to go out with a bang.

If you happen to be in Sitka on October 17th stop by between 12pm & 5pm; check out the equipment and grab lunch.

See you there...

