



Anacortes 8876 S. March Point Rd. 360-293-7788
Bellingham 1619 Kentucky Street 360-734-5717
Mt. Vernon 2609 Old Hwy. 99 S. 360-428-7788
Sitka 210 Jarvis St... 907-747-5315



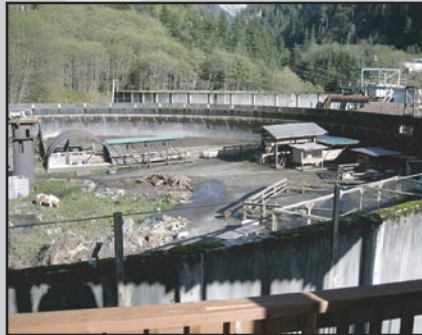
November 2007 Birch News

More Than Just A Rental Store

Customer Focus -

Fortress of the Bear...

a habitat for orphaned brown bear cubs, is located on 3 acres at Sawmill Cove Industrial Park in Sitka, Alaska. The goal of the Fortress of the Bear is to seek a better solution than just shooting the orphaned bears. In order to accomplish this mission, owners Les & Evy Kinnear established the bear habitat utilizing two abandoned Clarifier Tanks which are 14 and 17 feet high and each 3/4 of an acre. The current resident brown bear cubs, Chaik and Killisnoo, were orphaned after their mother was shot. They were captured by the Wildlife, Fish & Game Association in a last ditch effort to protect them before winter hit.



Sitka is a city that has over 400,000 visitors per year. Fortress of the Bear gives visitors the opportunity to see bears in a naturalized setting from a covered viewing area. There is an adjacent petting zoo with pigs, sheep, goats, ducks, geese, turkeys, rabbits and miniature horses.

The animals are well fed from out-dated produce, dairy and bakery products from all the local markets, which makes Fortress of the Bear the largest private recycler in Sitka, saving the city and private businesses more than \$10,000 yearly in waste disposal.

Once fully operational, the habitat will provide more than six year-round professional positions; during summer months more than 10 wildlife interpreters will be employed.



Birch is a Toys for Tots Drop Off Point ...

Toys can be dropped at Birch until December 14th. Every year Birch stores serve as drop off points for the Marine Corp. Toys for Tots Fundraiser. The mission of the U.S. Marine Corps Reserve Toys for Tots Program is to collect new unwrapped toys during October, November and December each year and distribute to children in the community. This will be Birch's 10th year as a drop off point. 'Tis the season for giving - you can help us pass the 2,000 mark! Swing by any Birch store, grab a fresh cup of coffee and drop a new unwrapped toy in the toys for tots bins. Short on time? Birch has a variety of toys for kids of all ages.

Want to help with the toy distribution? Let us know and we'll get you scheduled. Dates and times to choose from are:

- Dec. 6, 7, 8 - 9am to 6pm
- Dec. 13, 14, 15 - 9am to 6pm
- Dec. 20, 21 - 9am to 6pm
- Dec. 22 - 9am to 5pm

Email marketing@birchequipment.com or call 360-734-5744 ext 107

Thanks....2000+ Times

September and October were busy months for Birch, our 4 open houses brought our great customers in (sometimes twice) for our famous wild salmon lunch. We just want to thank everyone for making these events so fun, and giving us the opportunity to say thanks. Besides, it's a great excuse to catch up, check out equipment, and best of all, eat!



Who knew an egg could cause so much competition?

Forget the carnival ride a boom.



Good food, good conversation!

Thanks for coming - see you next year.

Check our website for more equipment information.

Check your mail...for the new Valpak coupon



Bring on the storms...

Birch has what you need:

- Pumps
- Heaters
- Blowers & Fans
- Dehumidifiers
- Generators
- ... and much more!



Call any store, anytime...we're available 24 hrs / day.

Anacortes
8876 S. March Pt. Rd.
360-293-7788

Bellingham
1619 Kentucky St.
360-734-5717

Mt. Vernon
2609 Old Hwy. 99 S.
360-428-7788

\$10 OFF

With Any Tool Or Equipment Rental Of \$60.00 Or More OR A FREE T-SHIRT

*Cannot be combined with any other offer. This coupon must be presented at time of rental. Expires 12/31/2007

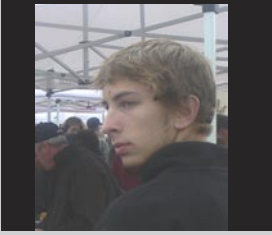
OPEN : M-F [7:00-5:30] Sat [7:00-3:30] www.birchequipment.com

Our Local Source With Over 40,000 Pieces Of Equipment... Sure Beats Using a Shovel!

Valid at any of our stores, bring this newsletter, or coupon in to receive instant savings on all your equipment needs for winter clean up and in side maintenance.

www.birchequipment.com

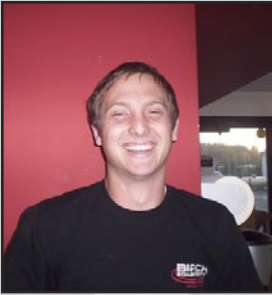
New Crew



Dillon Boland-Yard Rep-
Bellingham
 • Likes working on cars, and martial arts.
 • Wants to own a business
 • Likes working at Birch because there is diversity in the work.



Aaron Monds-Yard Rep-
Bellingham
 • Loves to snowboard and camp.
 • Has an older brother, sister, and younger brother
 • Likes working at Birch because "I like to drive the rigs, and I admire Randy Schibret.



Lance Bradley-Yard Rep-
Anacortes
 • Likes working on cars and trucks.
 • Want's to go to auto body school after graduation
 • Likes working at Birch because "I get to learn about all the big equipment".



Abbey Corzine-Marketing Asst-
Corporate
 • Loves to play soccer
 • Wants to be an Ad Exec or E News host
 • Has a younger brother
 • Likes working at Birch because "The environment is fast paced, and the people are great".

JOIN THE BIRCH TEAM!



It's time again for the Jingle Bell Run/Walk for Arthritis! You can join the Birch team online at:

www.bellinghamjbr.kintera.org

Put Birch Equipment on the registration form in the team name spot.

Donations can be dropped at any Birch location, or to the Birch team online.

Our friend Barbara Osen, Branch Director, has been with the local chapter since the first event in 1988 and she is amazing! Here's her encouragement ...

"Do it for the kids. There are more kids with juvenile arthritis than any other chronic disease. With companies like Birch getting involved and raising awareness, more people will get involved. The Jingle Bell Run/Walk allows people to get together, have some fun and help support a great cause. Everyone knows someone that is afflicted with this disease..."

Hope to see you there!

Drop Lights

- heavy duty
- protection cage

Light Stands

- 500 watt single
- 1000 watt double
- 1500 watt single
- tripod mounted
- adjustable legs
- telescoping stands

Light Towers

- 4-1000 watt lights
- 30' mast
- 6kw generator w/outlets
- towable

Generators

- 2.4 to 350 kw
- gas or diesel powered
- up to 72hrs run time
- portable, skid or trailer mounted
- automatic transfer switches available

Heaters

- indirect fired, propane, gas & electric powered
- up to 600,000 BTU's

Pumps

- 1" to 6" Trash, Submersible & Diaphragm (gas, electric, diesel & air powered).

Dehumidifiers

Fans & Blowers



Birch is Winter Ready

Bring on the storms...Birch has what you need to make clean up easier and keep your job going. Get what you need when you need it, with 24 hour on-call service you can get emergency equipment when you need it most, right now!

Dry out fast and keep work going with:

- pumps
- heaters
- dehumidifiers
- fans & blowers
- generators
- light towers & stands

Birch has the raingear and reflective wear to keep you dry & visible this winter.

- 2 piece rain gear
- reflective safety vests
- caution & danger tape



Bring this coupon or newsletter into any Birch locations and receive instant savings and help for holiday decorating this winter.

Need help putting up lights?

\$5 OFF

all Aerial, Ladders & Scaffolding

Good Through 01/31/2008