

January 2009 Fleet Updates

More Than Just A Rental Store

Customer Focus ... Colacurcio Brothers

Brothers Dan & Frank Colacurcio started their construction company over 1/4 of a century ago with 1 backhoe and 1 dump truck. Today, Colacurcio Brothers is one of the regions' most well-known construction outfits with two separate divisions and over 50 employees.

Nick Cummins, Project Superintendent, has been with the company for over 6 years and says, "It's Colacurcio's commitment to their employees' well-being that is part of their success."



One of the company's current projects being headed up by Nick is the Agape House located in Bellingham at F Street and Roeder Avenue. It is an extension of the Lighthouse Mission and will provide emergency housing for women & children. Nick is extremely proud of Colacurcio's part in helping the Lighthouse Mission on its' quest to help those who can't help themselves.

Rent Ver\$u\$ Buy...



So why rent, instead of buy equipment for the jobsite?

- You can roll the cost of rental back into the cost of construction
- Maintenance Costs are more than you think (mechanics, time, tools, oils, filters, fuel tanks...).
- Extra Labor Cost associated with owning equipment i.e. when you're done with rental, just call to stop the rent and the operator goes home. When you own the equipment the operator has to stay on the clock to load, help transport and unload the equipment. The same process happens the next day when the operator has to clock on early to load and unload. In addition, the equipment needs to be greased and all fluids are checked to start the day.
- Storage Space you'll need a shop or garage to store your equipment.
- Transportation you need a truck and trailer to haul the equipment, or hire it out.
- Cost of breakdowns when your machine breaks down, you will still have to rent until it's up and running again, costing more money.
- Monthly Payments still need to be made on inactive equipment but you only rent when you have work.
- Licenses and Fees plus renewals, trip permits, etc...

Focus on the job, save \$\$\$ & leave the equipment to us!

Incoming Fleet...

Manitou Rough Terrain Forklifts

- 6,000 lb capacity
- 17' lifting height
- Overall height 8' 4"
- High visibility mast with innovative side shift capability
- 4x4 - available with open or fully enclosed cab
- Front & Rear lights
- Backup Alarm
- Strobe light
- 26 gal fuel capacity



Temporary Power Boxes

- 50 amp input & output
- Daisy chain capability
- 6 - 20 amp GFI & breaker protected outlets
- 1 - 30 amp breaker protected outlet
- All plugs are equipped with covers for protection against the elements.



*Birch recently added almost 3 miles of additional Temporary Power Cords to our current inventory.

For additional information check out our website:
www.birchequipment.com

Check Out the Used Equipment for Sale:

1200 Dehumidifier - used price starting @ \$849



Drying operation:

- flood damage
- drywall mud
- new paint
- humidity control

Usage Recommendations:

- Ideal running temperature is between 70 & 90 degrees
- 115 volt plug in
- Coverage ranges from 2,000 to 13,000 square feet.
- Run with 2 or more fans blowing air directly at the dehumidifier

Birch carries a full line of heating & drying equipment for rental & sale, including turbo dryers, ace fans, indirect heaters, electric heaters, moisture meters, and much, much more!

For more used equipment for sale go to:

www.birchequipment.com

Birch...People Strong!



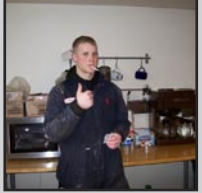
John Milas - Mechanic Assistant - Shop

- Born in Japan & travelled the world before settling in WA. John says he has spare time (hard to believe with 7 kids & a f/t job) but when he does, he calls Square Dancing.



Steven Olson - Mechanic - Shop

- Like a lot of long time Whatcom County residents, Steve's hobbies include crabbing & skiing.
- He attended the Bellingham School of Cosmetology & as a Beauty School Dropout made a career change, deciding to turn wrenches instead!



Dan Backman - Lead Mechanic - Shop

- A Skagit County native, Dan recently moved to Bellingham. He's a snowboarder & likes fixing up old cars.
- Dan likes working at Birch because of the great crew and the vast amount & variety of equipment.

Did you make a New Years' resolution?

The New Year usually finds us making promises to do everything better. Birch is here to help with all of your projects --- check out some of the tools and equipment that will make the job quicker, safer and easier:

• Cut & Break Saws

- easier to use than a hydraulic ring saw
- less expensive than a concrete chain saw.

• Tow Behind Boomlifts

- reach heights up to 56' safer than a ladder
- towable with a 2" ball, save on delivery fee
- 500lb basket capacity - take your tools, paint, etc. up with you.
- electric powered - no fuel charges

• Jam Saws & Undercut Saws

- reach under cabinets and overhangs to make cuts in flooring
- cuts flush with the wall
- vacuum fitting for dust control



Rated 90th among Rental Companies in the country, Birch is a certified dealer or distributor for these top brands:

- Billy Goat** - Lawn Care Equipment
 - Bomag** - Compaction Equipment
 - Clemco** - Sandblasting Equipment
 - CS Unitec** - Air Tools and Blades
 - EDCO** - Concrete Saws, Tile Saws, Brick Saws, Concrete Grinders & Planers
 - ERB** - Safety Equipment Glasses, Vests, Hard hats,
 - GarBro** - Concrete Placing Equipment
 - GEHL** - Reach Forklifts & Skidsteer Loaders
 - Genie** - Aerial Equipment : Boom lifts, Scissor Lifts, Personnel Hoists & Material Hoists
 - Granite** - Scaffolding, Loading Ramps, Fencing, Bleachers, Crowd Control, etc.
 - Green Bull** - Ladders, Planks & Accessories
 - Guardian Fall Protection** - Harnesses & Protection
 - Mathey-Dearman** - Pipe fitting Equipment
 - MK Diamond** - Concrete Saws, Tile Saws & Brick Saws
 - Multiquip** - Including Stow, Whiteman & Mikasa-Water Pumps, Generators, Welders, Lighting, Compaction, Concrete & Masonry Equipment
 - Norton Abrasives** - Sand Paper, Wire/Grinding & Cutting Wheels
 - Star Diamond** - Diamond Blades, Core Drill Bits and Grinding Wheels
 - Seymour of Sycamore** - Full Line of Spray Paint, Upside Down Paint & Primers.
 - Titan** - Airless Paint Sprayers
- Visit our [online store](#) for more info.



- *On a health note...a **BANANA** can help overcome or prevent a substantial number of illnesses & conditions, including:
- **Hangovers** - make a banana milkshake, sweetened with honey. The banana calms the stomach & the milk soothes & rehydrates your system.
 - **Seasonal Affective Disorder (SAD)** - Bananas can help SAD sufferers because they contain the natural mood enhancer tryptophan.
 - **Smoking** - The B6, B12, Potassium & Magnesium found in bananas help the body recover from the effects of nicotine withdrawal.

Bring on the Storms ... Birch has what you need, when you need it!



24 hr service - call any store, any time

- **Pumps** - 1" Submersible to 6" Towable Trash
- **Heaters** - Indirect, Propane, Electric, Kerosene
- **Dehumidifiers**
- **Blowers & Fans**
- **Generators** - Portable Gas to Towable Diesel Powered
- **Light Towers & Light Stands**
- **Dirt Equipment** - Excavators, Backhoes, Loaders

Local • Bigger • Better www.birchequipment.com

Hey, John ... is that you!? Home & business owners in Whatcom Cty are urged to report flood damage at www.whatcomcounty.us or (360) 778-8500