

BIRCH EQUIPMENT

Anacortes 8876 S. March Point Rd. 360-293-7788
Bellingham 1619 Kentucky Street 360-734-5717
Mt. Vernon 2609 Old Hwy. 99 S. 360-428-7788
Sitka 210 Jarvis St. 907-747-5315



August 2009 Fleet Update

More Than Just A Rental Store

Birch Provides Full-Service Maintenance & Repairs

Need service for your equipment but not sure where to go? Birch has a full service shop with experienced, factory trained & certified mechanics that are experts in preventative maintenance, annual inspections, major repairs and engine services on:

- Forklifts - Industrial, Reach, Rough Terrain
- Aerial - Boomlifts, Scissorlifts, Personnel Lifts, etc.
- Earthmoving - Tractors, Dozers, Exavators, Loaders, etc.
- Pressure Washers - Hot & Cold
- Lawn & Garden - Lawn Mowers, Augers, Stump Grinders, etc.
- Compaction - Rollers, Jumping Jacks, Rev Plates, etc.
- Concrete - Power Trowels, Vibrators, Breakers, etc.
- and much more.



How does it work?

- **Bring it in** - Birch's main shop facility is located on Kentucky Street in Bellingham. Delivery services are available if needed.
- **Stay on site** - Birch makes 'house calls', so you don't have to make the trip.
- Assessment and quote ready within two business days.
- On approval, necessary parts will be ordered - repair & service starts once parts arrive.
- Mechanics complete a thorough 31-point inspection on all equipment before being returned to the customer.

Need Parts? Birch is an authorized dealer for many major manufacturers.

- | | | |
|--------------|------------------------|------------------|
| • Bomag | • Gehl | • Mathey Dearman |
| • Billy Goat | • Genie | • MK Diamond |
| • Clemco | • Granite Scaffold | • Miller |
| • CS Unitec | • Green Bull - ladders | • MultiQuip |
| • EDCO | • Lincoln Electric | • TCM |
| • Gar-Bro | • Manitou | • Titan |

Birch performs routine maintenance and repair services on everything that we rent or sell, as well as our mobile, on-site repair services. Birch minimizes downtime on equipment through the efforts of our well-trained and professional maintenance staff and our comprehensive maintenance and safety inspection program. Every item we rent is thoroughly inspected and tested after each rental to ensure that our customers have the most reliable equipment available to complete their jobs as quickly and efficiently as possible.

Want more info or need to set up an appointment to have equipment repaired? Contact any store or shop@birchequipment.com.

Incoming Fleet

From Cranes to Hand Tools, Birch has what you need to get the job done.

Multipurpose Scaffoldings:

- Industrial quality.
- Includes: 2 frames, 2 braces, 1 plank, 4 casters.
- 500 lb. capacity
- Stackable



New retail price: \$199.99

Manual Pallet Jacks:

- High quality 5000# capacity
- Durable powder coat finish
- 2 - 1/2" lowered height for smaller pallets
- 48" Forks



New retail price: \$345.00

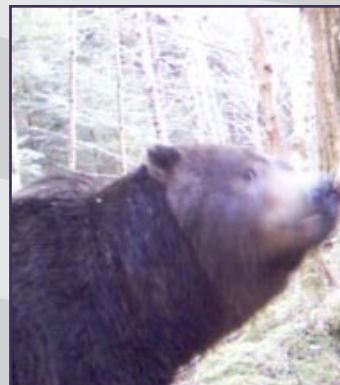


Photo from day hike with our Sitka customer, Hugh Bevan. Hugh's hat in the photo; Hugh in nearby tree.

Used Equipment Specials ...



310 Backhoes
Starting @ \$22,500



36" Box Fans
Starting @ \$249



Hand Held Core Drills
Starting @ \$299

- 2 1/2 Cubic Foot Concrete Mixers
- Stand Mounted Core Drills
- 27' Rough Terrain Scissorlift 2x
- 2-Man Auger

- Starting @ \$ 359
- Starting @ \$ 799
- Starting @ \$11,795
- Starting @ \$ 379

Used pricing good until 8/31/09 or while supplies last.

Summer Safety ...

Tips for working outside in the heat:

- **Drinking Water** - OSHA requires that employers provide drinking water. It should be kept in a sealed container with a tap. Workers must not be allowed to use a dip cup or drink directly from the container.
- **Clothing** - Outdoor workers should protect their skin by wearing loose-fitting long-sleeved shirts and pants. A hat is also a good idea, and if required to wear a hardhat check out the wide-brimmed hardhats.
- **Sunglasses** - While there is no regulation requiring an employer to provide sunglasses, safety glasses are available in all price ranges with shaded lenses that block 100% of both UVA & UVB rays.



Birch carries a complete line of PPE including vests, hard hats, earplugs, safety glasses, caution/danger tape, fencing and more. All are available for single item purchase, case, pallet or truckload.

Contact any store or purchase online at www.birchequipment.com.

Burn Ban - Island, Skagit & Whatcom Counties:

Due to dry conditions and hot summer weather, an outdoor burning ban is currently in effect in Island, Skagit and Whatcom Counties. This restriction bans outdoor burning, except for **Recreational Fires** that are:

- **Less than 3' in diameter and 2' high.**
- **Must be contained within a fire pit that is clear of all combustible material within a 20' radius.**
- **Must be monitored at all times.**
- **Must have a water source readily available (at minimum a charged water hose or a 5 gallon bucket of water).**

For more Burn Ban information in your area:

Skagit County	360.428.1617 ext. 4
Island County	800.622.4627 ext. 4
Whatcom County	360.676.6934

* Remember when the ban for Land-Clearing Burning is lifted, Birch has the required:

- Brush Fans
- Water Trailers
- Excavators

Call any store or check out our website for more equipment information.



www.birchequipment.com

Mark Your Calendars for the 13th Annual

Birch Equipment Demo Days ...

- Mount Vernon** • September 3rd • 11am - 2pm
Anacortes • September 10th • 11am - 2pm
Bellingham • September 24th • 11am - 2pm
Sitka • October 2009

- Hands-on Equipment Demos & Competitions
- RJ's Annual Tent Sale featuring equipment & retail specials
- Give-outs & Drawings - Birch T-Shirts (for the first 100 customers)
- Check out new line of kids equipment toys
- BBQ lunch on us!

Upcoming Equipment Training...



August 12th @ 9 am -

- Genie Train the Trainer - Whatcom County
- Gehl Train the Trainer - Skagit County

From the weekly equipment training to monthly Train-the-Trainer classes, Birch has you & your crew covered. Train-the-Trainer classes are instructed by certified Birch staff and factory reps and combine classroom instruction with extensive hands on equipment training. Participants will be certified to provide the necessary training to qualify employees as Genie scissorlift & boomlift operators, and Gehl reach forklift operators.

Weekly training classes cover everything from demo saws to pressure washers to tile saws to dingos and more are open to the public FREE of charge.

Classes are scheduled out for the year ... check out the training calendar on the Birch website at: www.birchequipment.com

Did you know Birch rents these ...



Carpet Cleaners



Floor Nailers



Lawn Mowers

For more equipment info go to www.birchequipment.com

Future Equipment Operators Visit Birch...

A group of first grade students from Bellingham's Happy Valley Elementary School had a field trip to Birch recently, here are some of their favorite things:

- "It was very fun - especially going up in the scissorlift"
- "Thank you for letting us sit in the adult chairs."
- "It was the best field trip. I wish I could work there."
- "I liked when we got to eat lunch in the conference room."
- "Thank you for the goodie bags with the equipment toys."



Interested in a Birch facility tour? Contact any store to schedule.